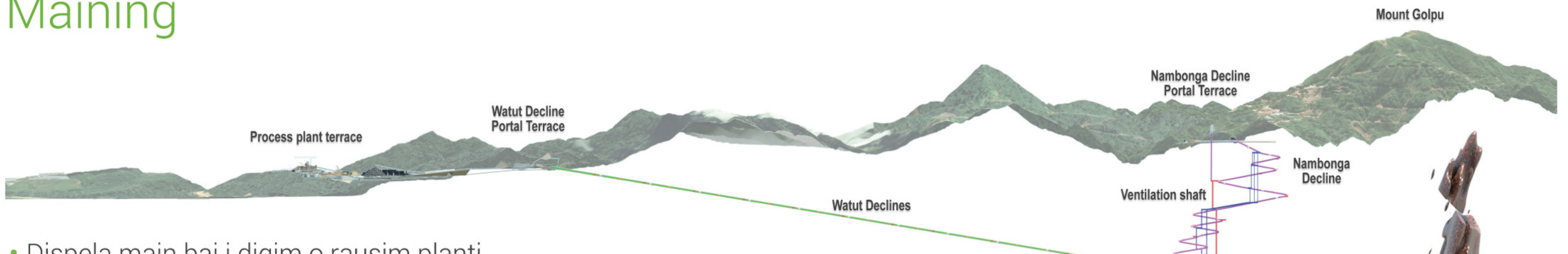
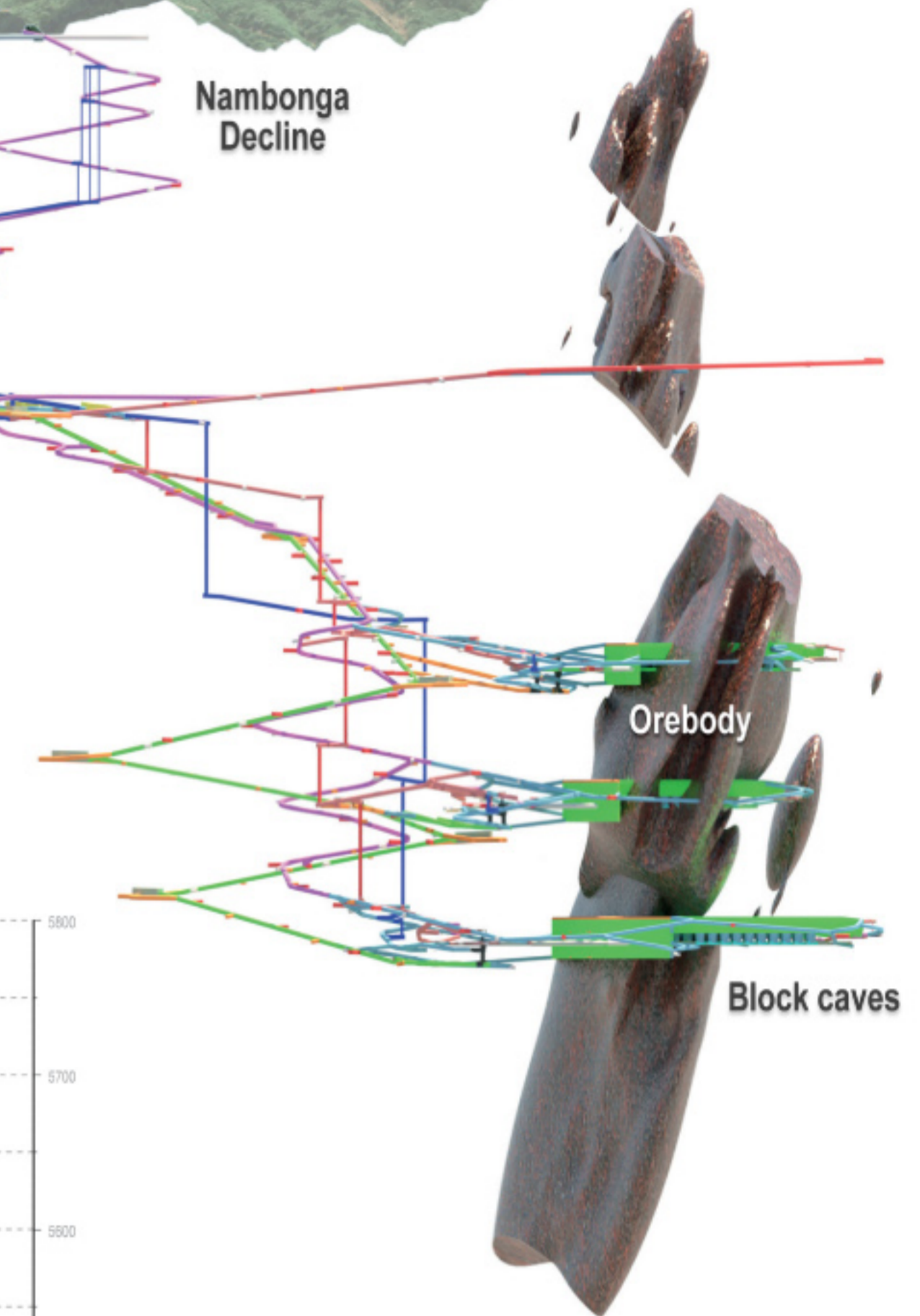
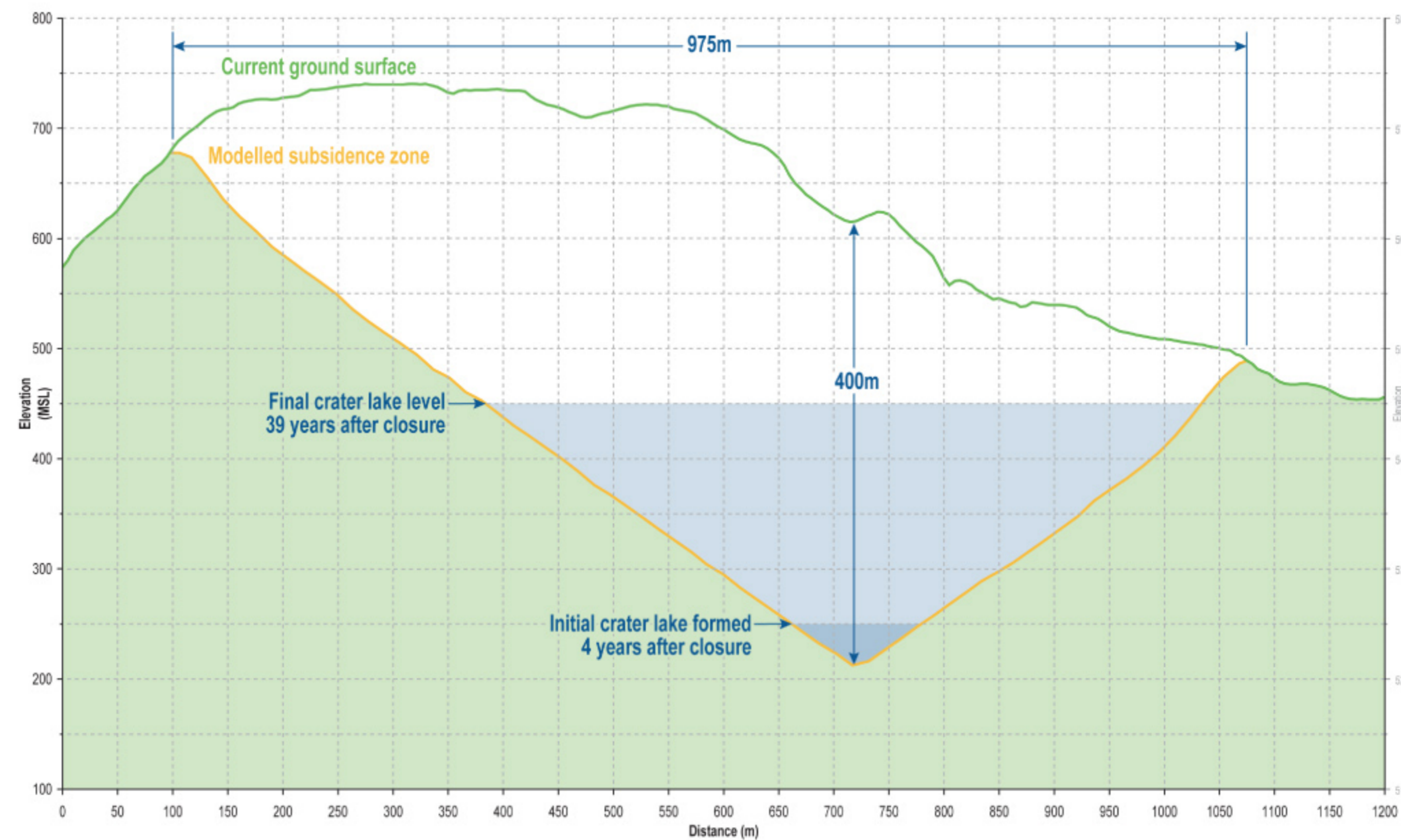
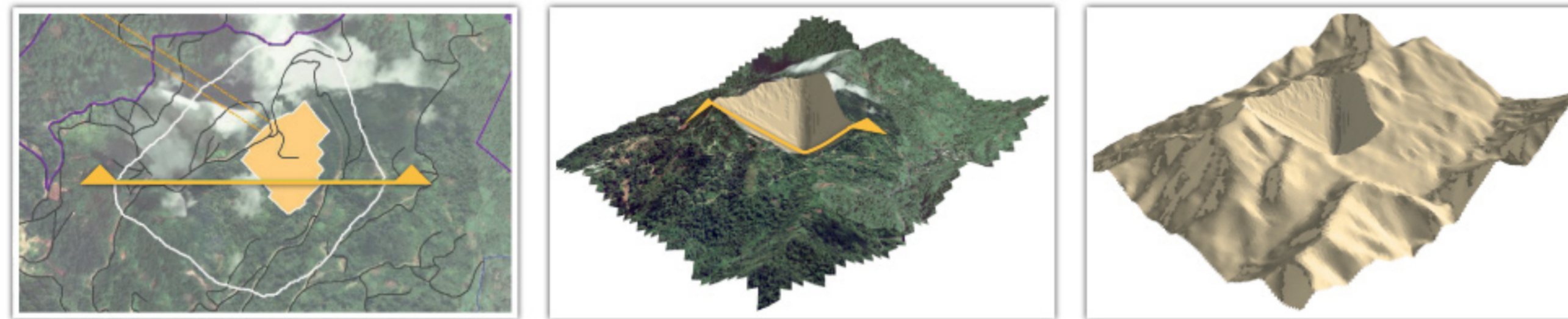


Maining

- Dispela main bai i digim o rausim planti stret ston o mineral rok ol i kolim ore (kopa na gol).
- Main bai i yusim block caving.
- Block caving save usim presa bilong graun wantaim presa bilong rok yet insait long cave. Dispela presa save brukim rok insait long cave na mekim isi long rausim ol ston taim ol i bruk kam daun.
- Taim main i ron long mak bilong em, em bai rausim million tonnes mineral rok long wan wan yia inap long 28pela yia.
- Oli bai wokim tripela diklain - Watut (tupela) na Nambonga.
- Taim maining kamap na sevenpela yia go pinis, em i bai daunim strong bilong ore bodi na het bilong ore body (Mt Golpu) em bai i bruk isi isi go daun.



Piksa sowim orebody, subsidence zone na eksklusen zone bilong main

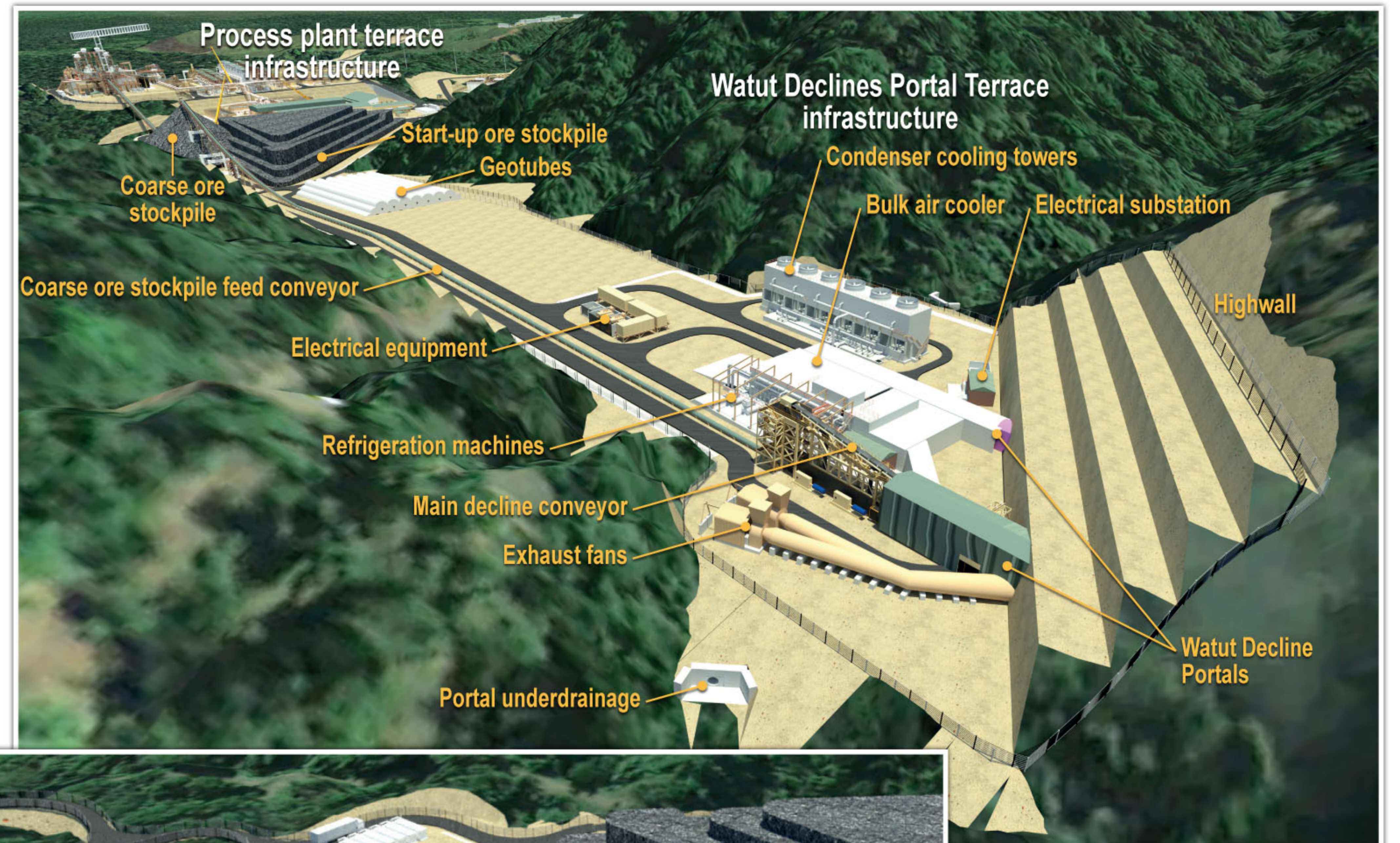


3D model sowim block cave mainin

Prosesim ore o ston

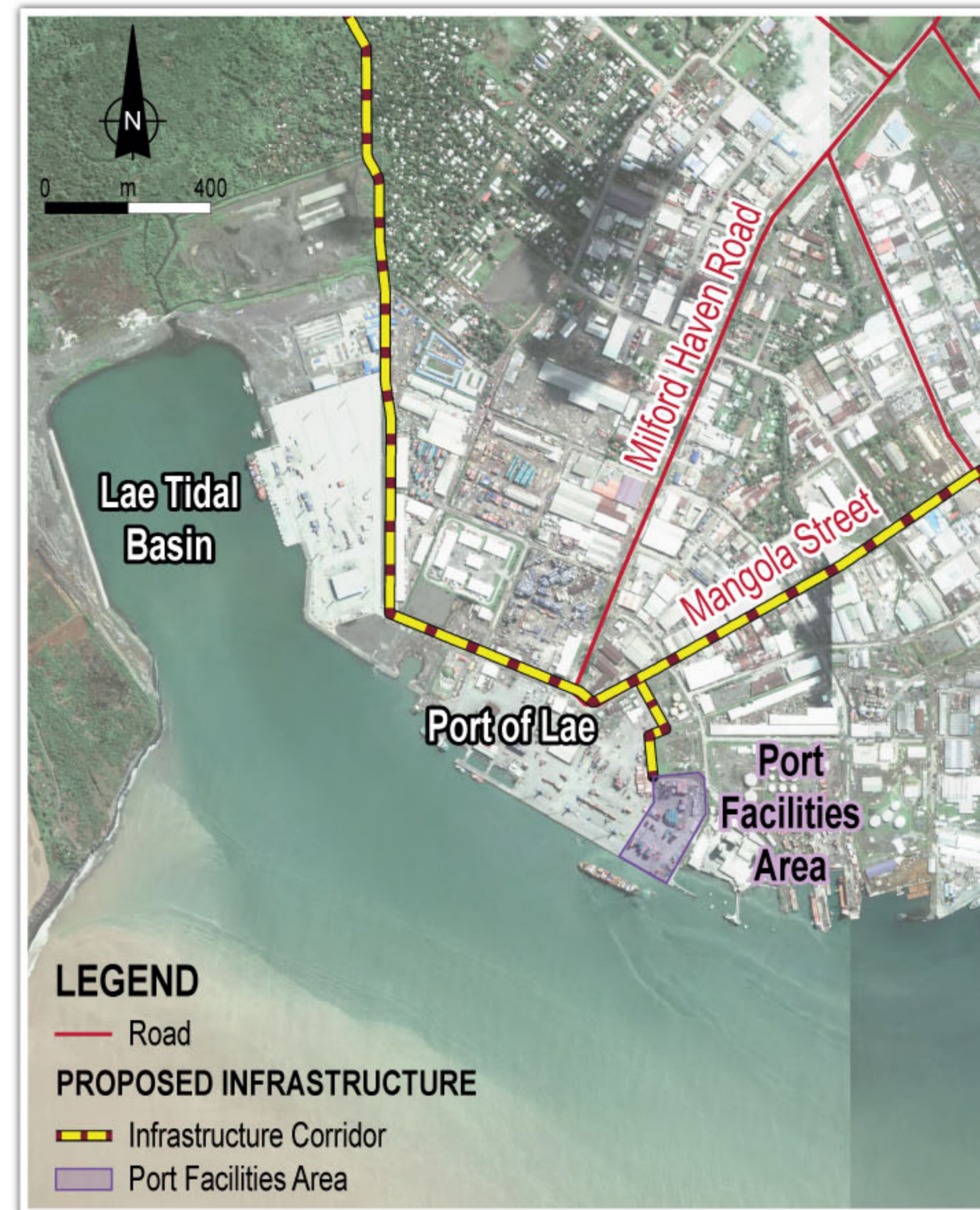
- Masin bai brukim ore o ston i go liklik long andagraun yet bihain putim long masin ol i kolim 'conveyor' bai karim i go antap.
- Ol gutpela ston bai ol i brukim go liklik stret olsem wesan na salim i go long proses plent we ol bai rausim gutpela minerol.
- Ol i kisim dispela gutpela ston o minerol na ol bai yusim 'flotation system' long seperetim gol na kopa.
- Dispela flotesen proses ol i bai yusim ol kemikol (olsem londri pauda) na rausim stret gol na kopa.
- Pinis bilong dispela proses em ol i bai kisim konsentret (concentrate) na ol pipia bilong dispela proses ol i kolim 'telings'.

3D model i sowim hap bilong proses plent na Watut potol terrace infrastraksa (above) na flotesen proses (below)

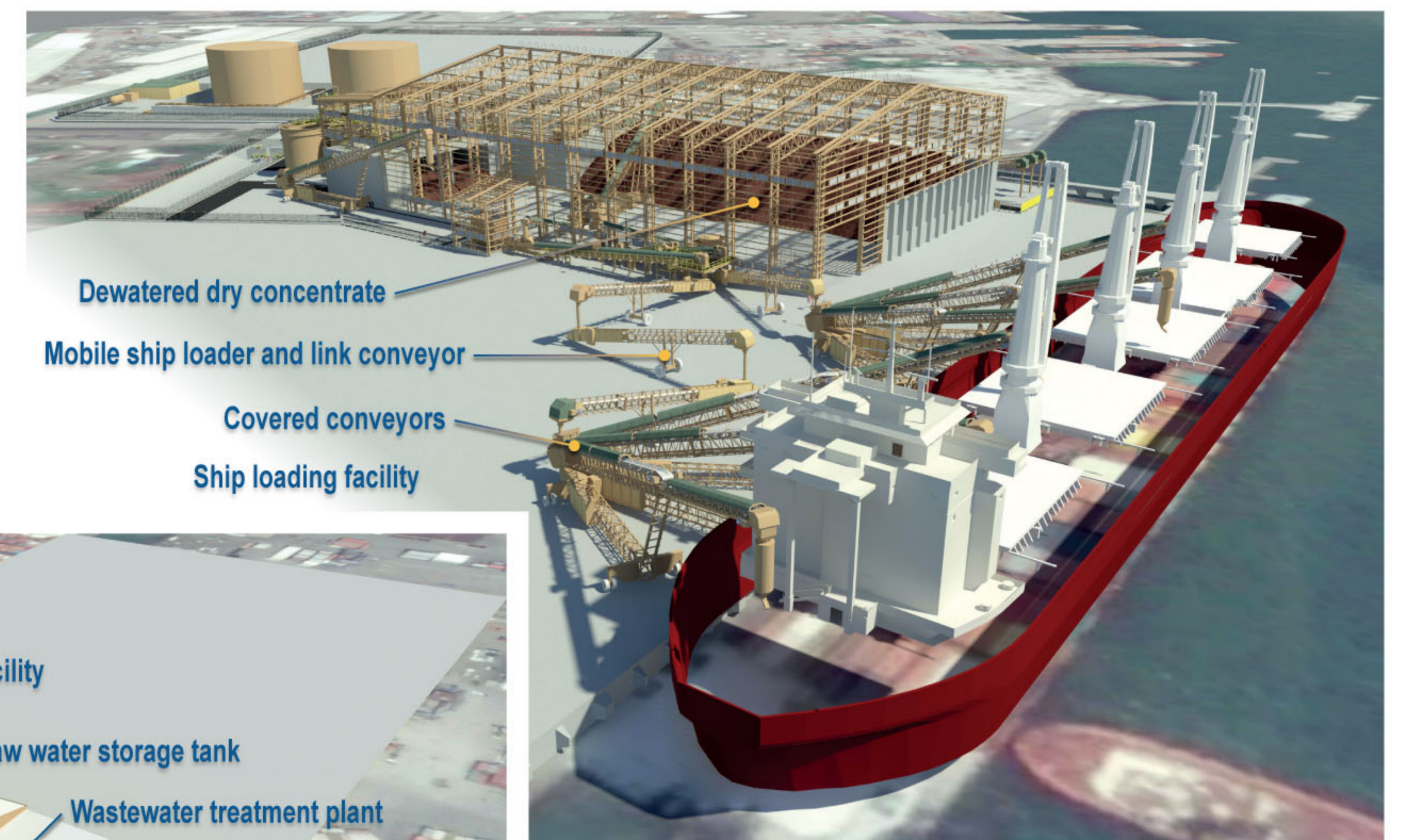


Konsentret ekspot long Lae Wof

- Ol i bai miksim konsentret wantaim wara na salim long paipain i go daun long Lae City wof. Long hia ol i bai drain konsentret na putim long wanpela haus. Evri tupela wik sip bai i kam kisim dispela konsentret na karim i go long narapela kantri long prosesim.
- Dispela ol pot fesilitis bai i gat:
 - Hap bilong holim konsentret
 - Wanpela liklik haus bilong pawa
 - Plent bilong weist wara tritmen
 - Hap bilong rausim trited wara go long solwara

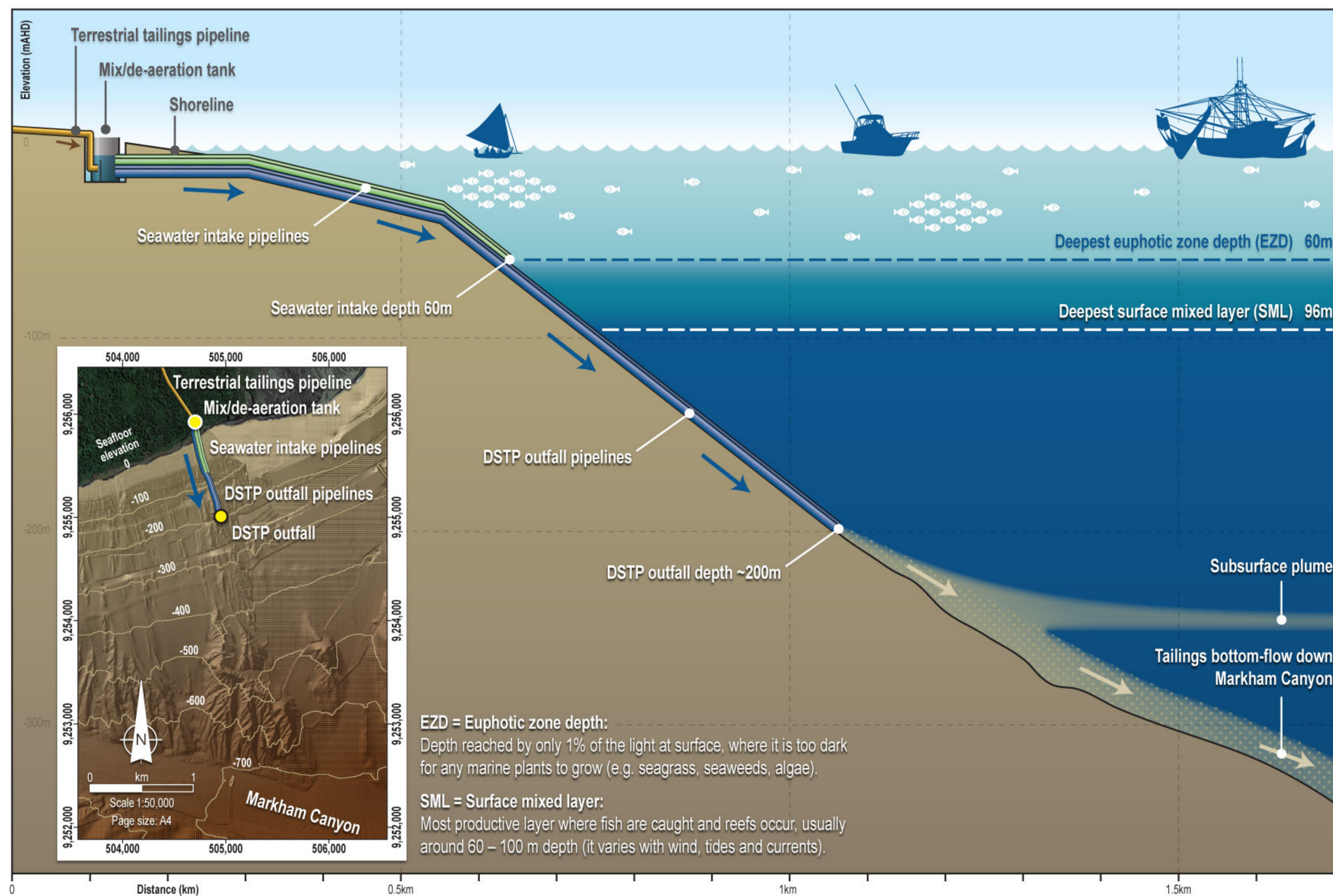


Sindaun bilong ol pot fesiliti

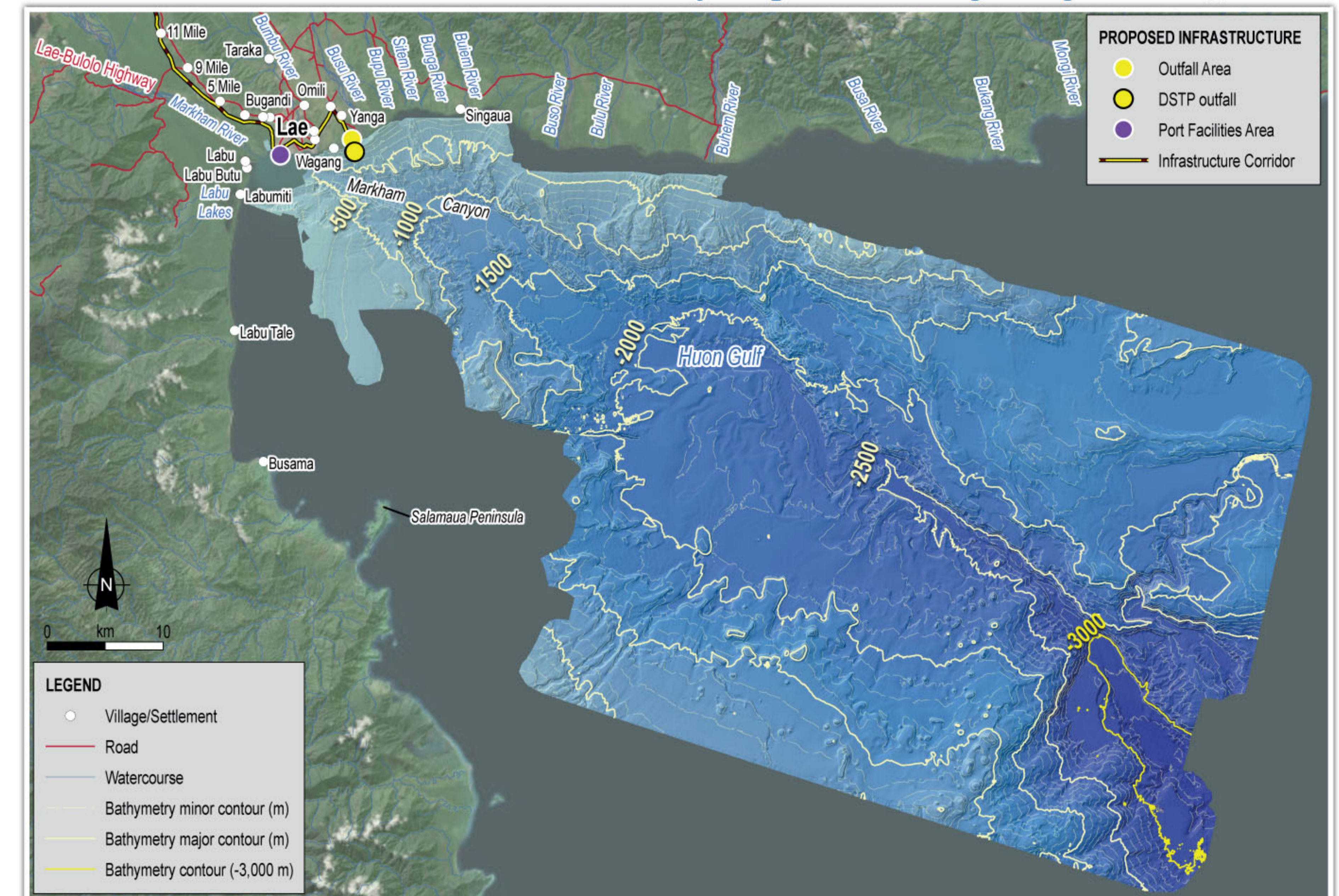


Deep sea tailings placement (DSTP)

- WGJV i bin mekim wok painim aut long tripela wei long lukautim gut telings. Namba wan em long mekim wanpela dem antap long giraun ol i kolim 'Tailings Storage Facility' or TSF. Namba tu em ol i kolim land-based dry stacking' na namba tri em long rausim i go long dip solwara. Dispela em ol i kolim Deep Sea Tailings Placement (DSTP).
- WGJV i mekim wanpela bikpela stadi bilong hap long putim TSF; em i stadim 45pela hap. Na tu stadi i sowim olsem taim ol i laik bungim pipia wesana wara insait long TSF, bai bikpela hap giraun tru bai bagarap.
- TSF na dry-stacking i gat bikpela salens olsem hap bilong ren na guria.
- Stadi i tok olsem solwara bilong Huon Gulf i orait long kamapim. Ol bikpela wara olsem Busu na Markham i save karim bikpela sedimen (ston na wesana) i go insait long canyon na go yet insait long bed bilong solwara.
- Wafi-Golpu Projek i skelim olgeta dispela stadi na i lukluk long yusim DSTP.



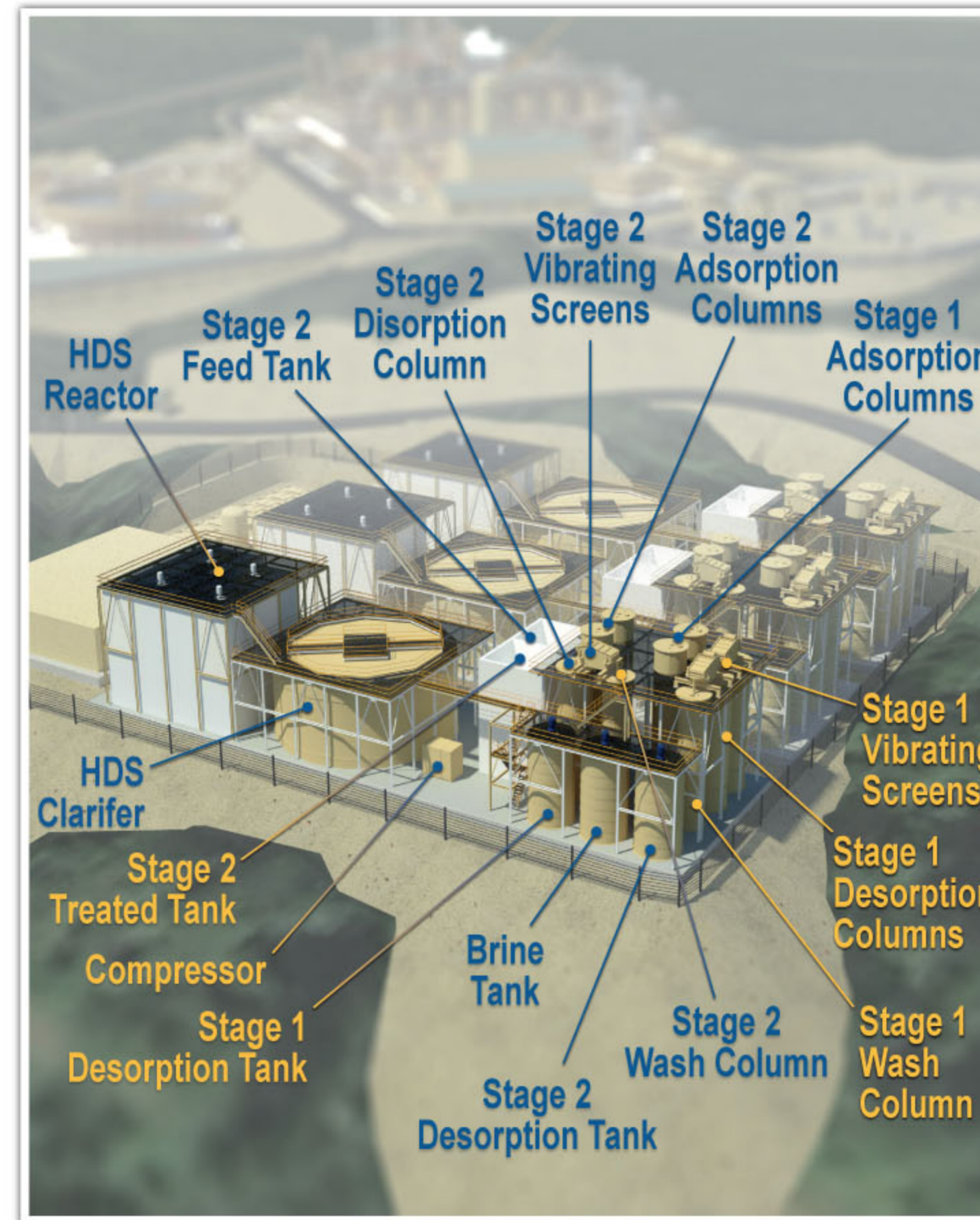
Huon Gulf deep water bathymetry to over 3,000 m



Dispela piksa sowim hau DSTP bai wok

Ancillary infrastructure

- Main bai i nidim ol ekstra infrastraksa long givim sapot long operesens na dispela em:
 - Pawa plent
 - Weksop
 - Opis
 - Hap bilong ol wokman long slip
 - Hap bilong ol bom (explosives)
 - Tritment plent bilong wara
 - Paip bilong kisim weist wara i go long Wara Watut
 - Damp bilong weist rok
 - Hap bilong putim sedimen
- Projek bai nidim tu hap giraun bilong putim ol traipela ston o rok.

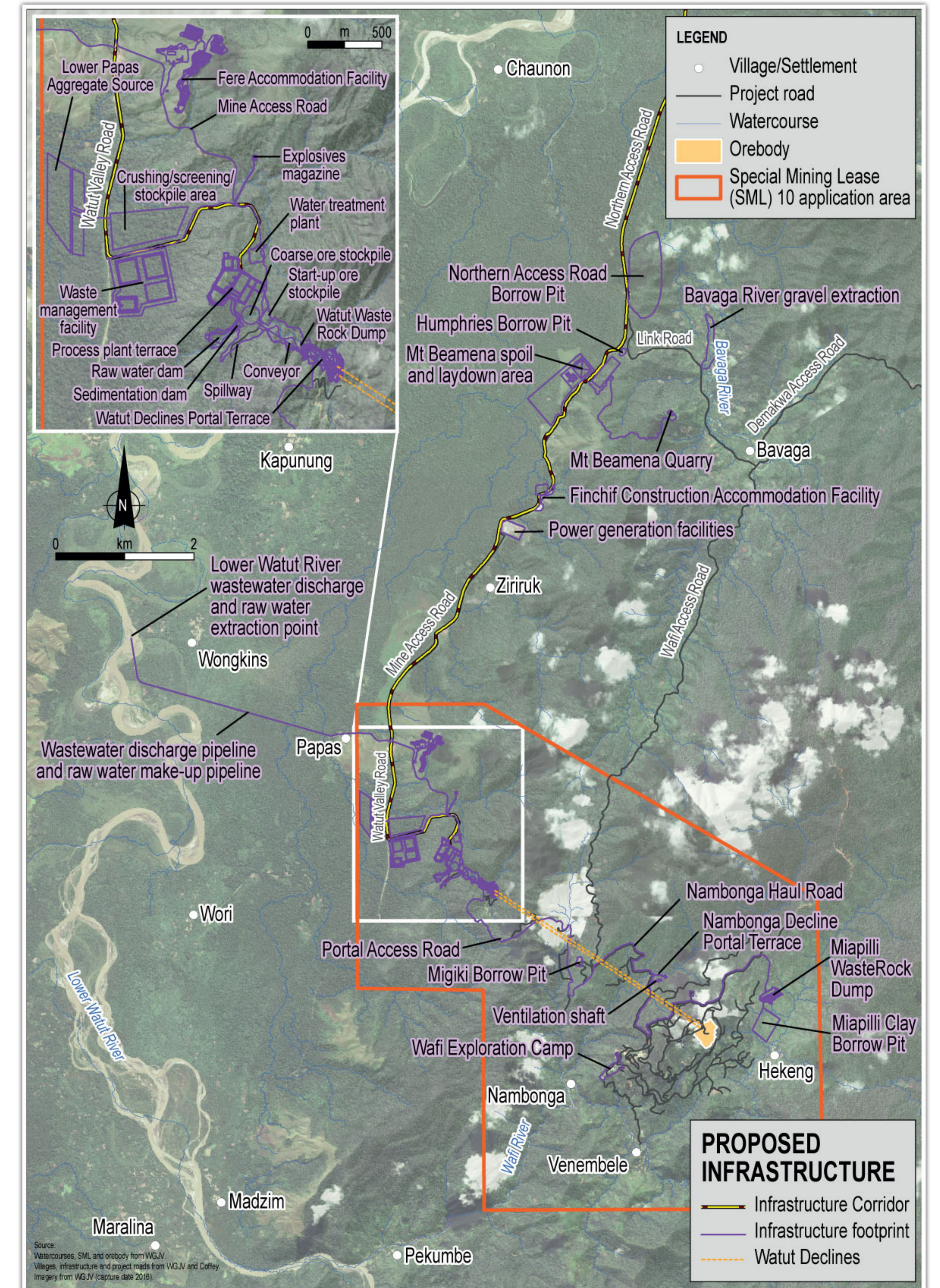
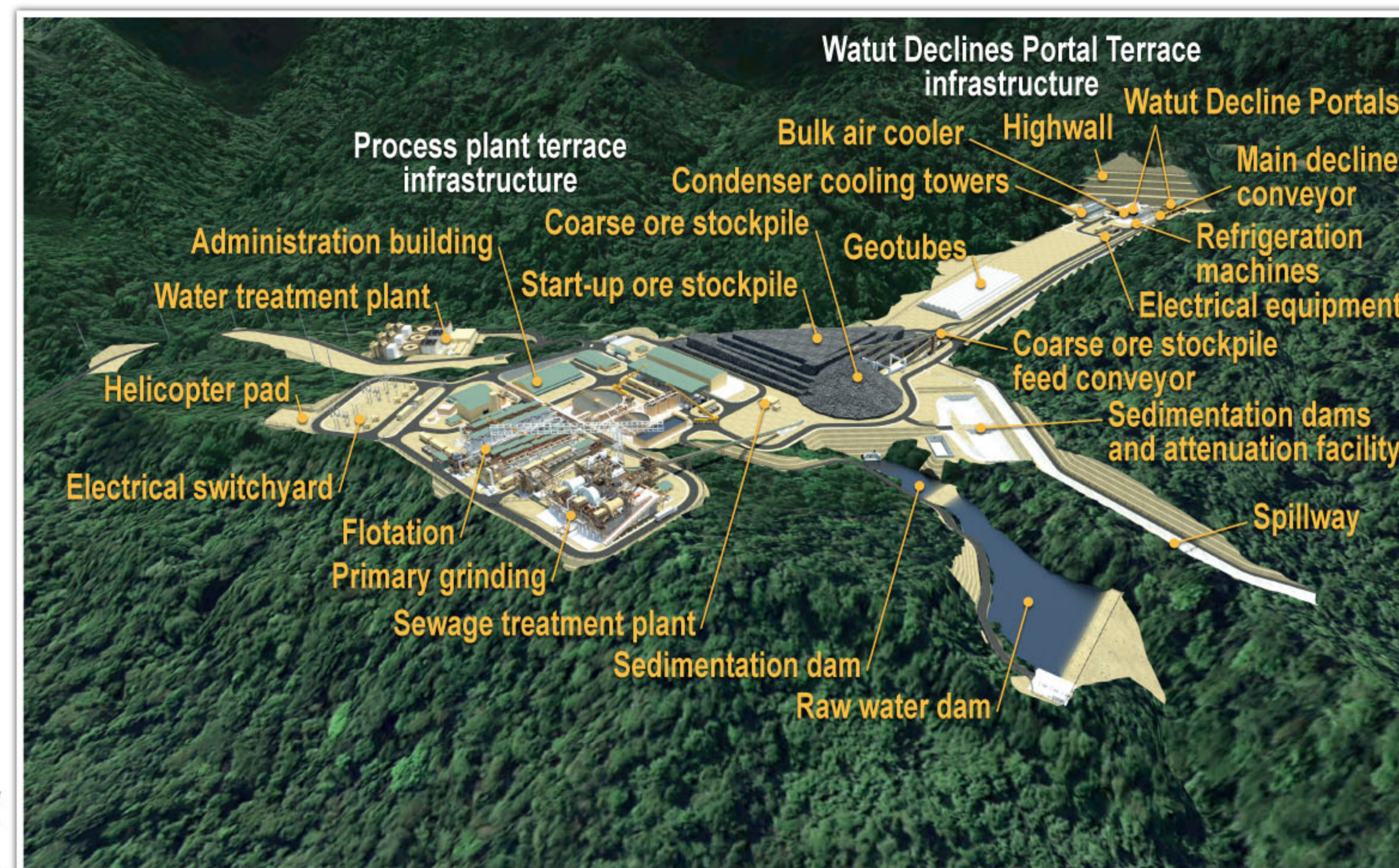


Tritment plent bilong wara



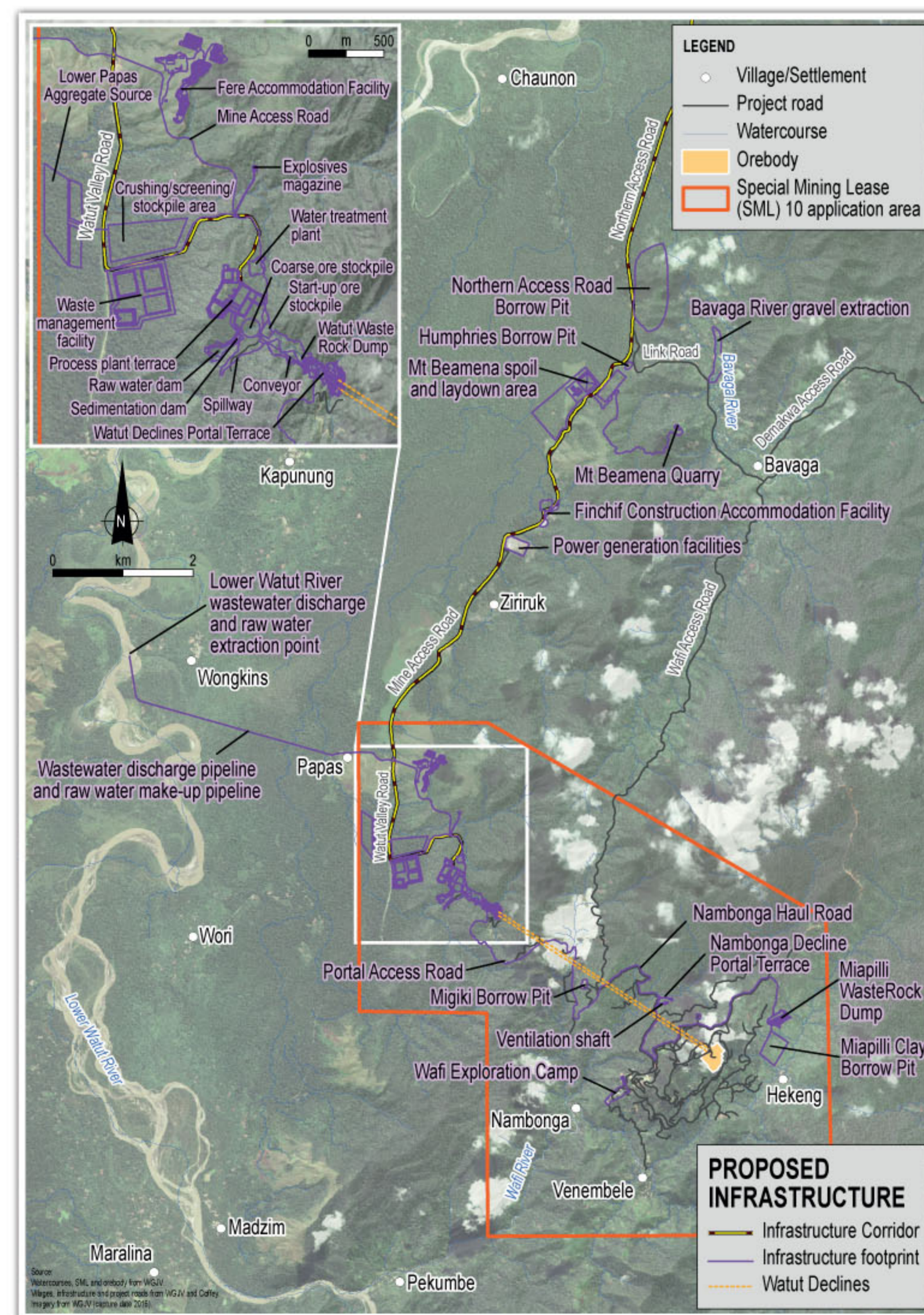
Damp bilong weist rok

3D model i sowim proposed infrastraksa bilong Main

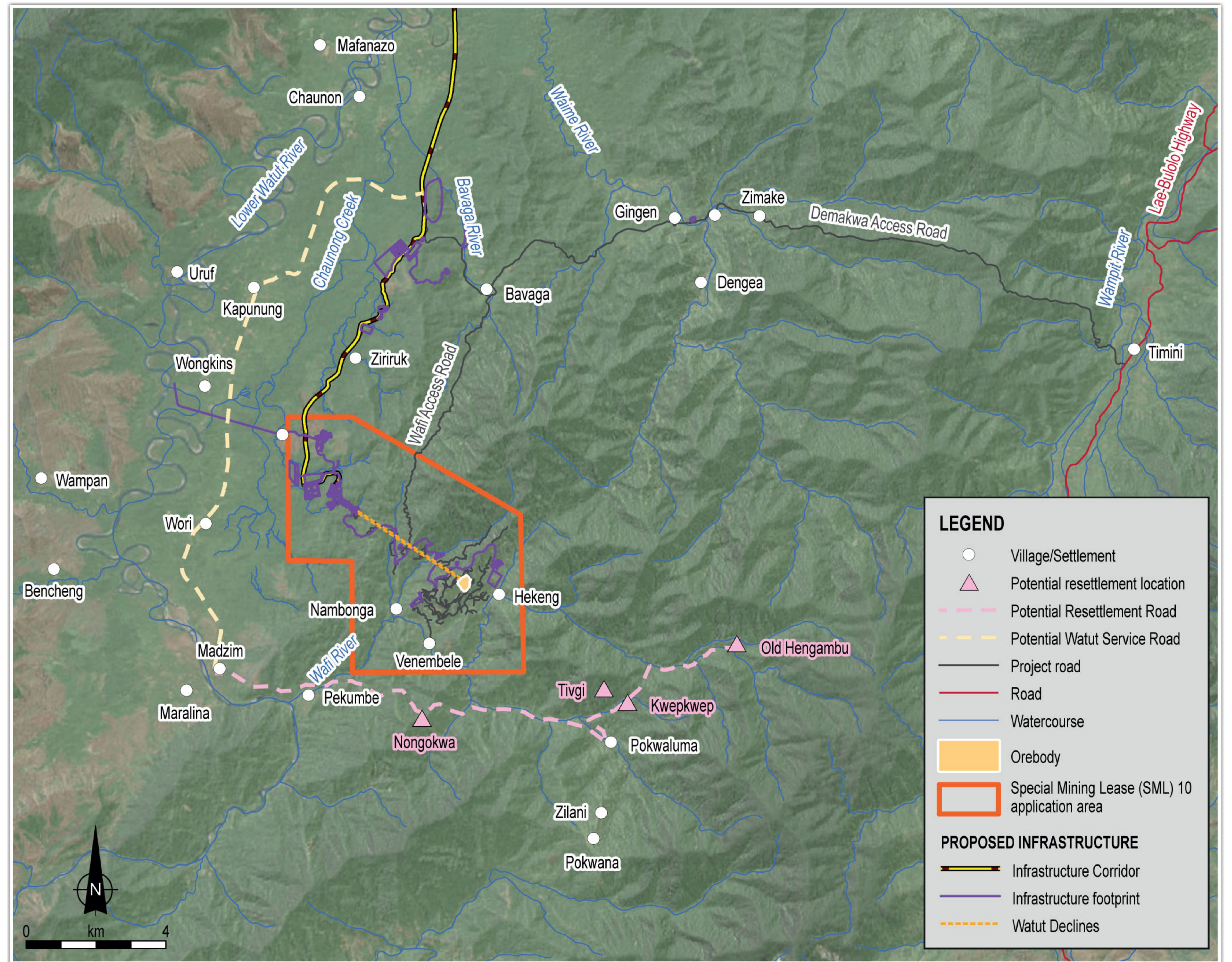


Rot

- WGJV i lukluk long wokim niupela rot (Northern Access Road); stat bilong em Bavaga na i go olgeta long Zifasing.
- WGJV bai kamapim wanpela kominiti ekkses rot ol kolim Watut Access Road.
- Kampani bai lukluk tu long kamapim tupela kominiti ekkses rot.



Hap we Northern Access Road bai sindaun

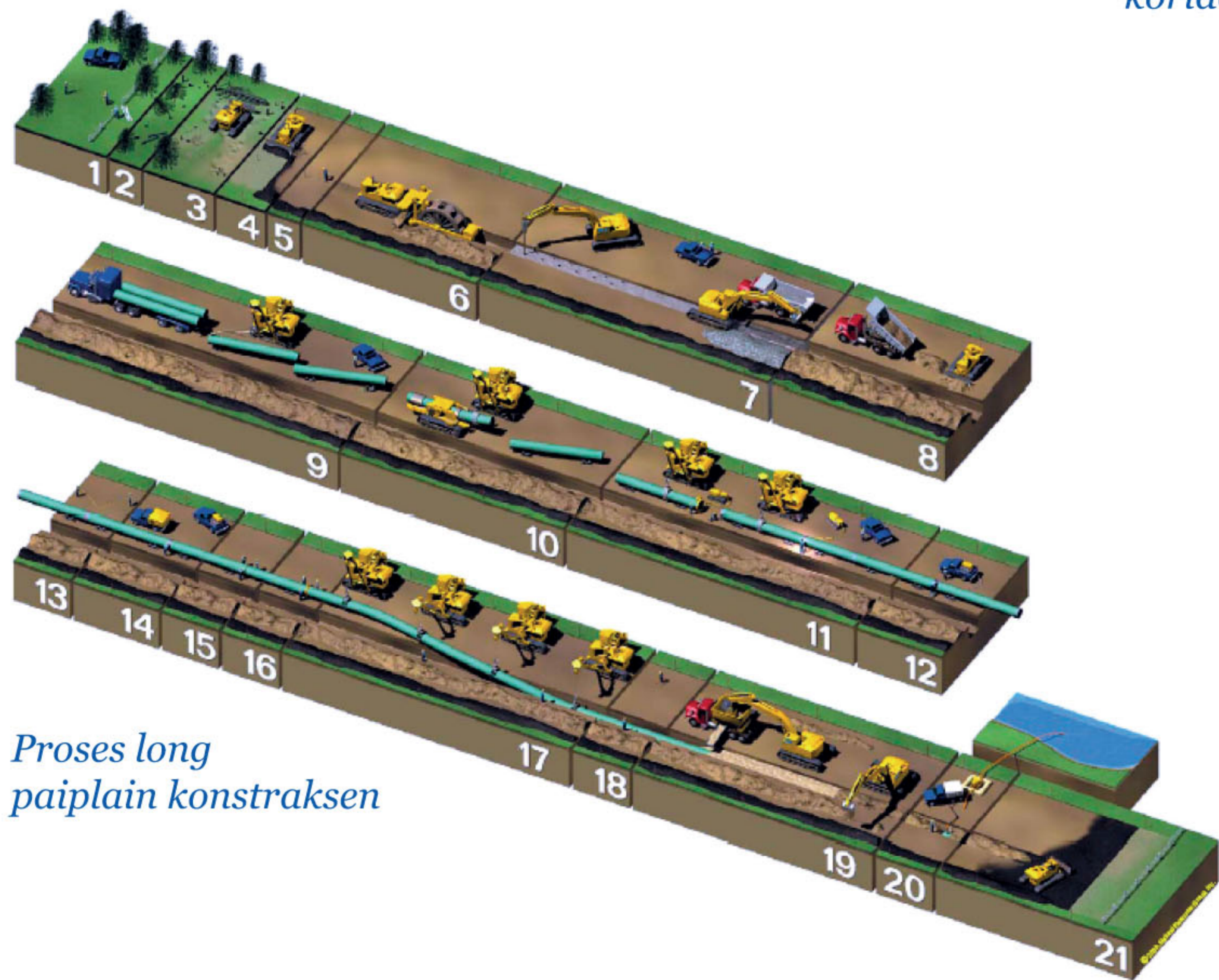
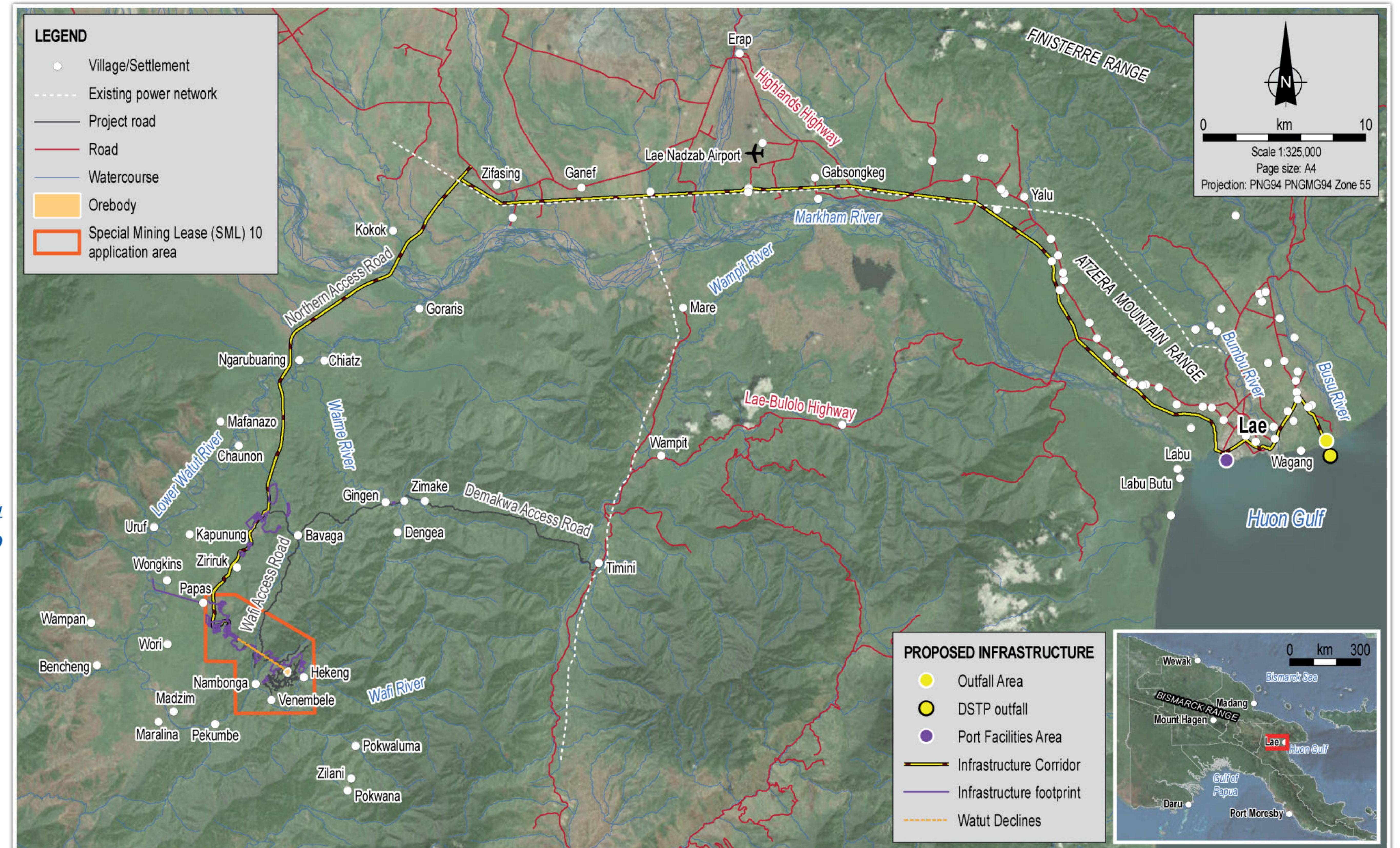


Ol ekkses rot na sowim tu lukluk bilong ol kominiti ekkses rot

Infrastraksa korido

- Infrastraksa korido bai i gat:
 - Rot bai kamap long stat long Mt Golpu na i go olgeta long Zifasing. Kampani bai sanapim bris long Bavaga, Watut and Markham wara.
 - Paip plain aninit long graun bilong karim konsentret, telings na fuel. Paip plain bai stap ples klia long tupela hap tasol, long bris bilong Wara Watut na bris bilong Wara Markham.
 - Kampani bai bildim rot i go pas na bihain bai putim paip plain

Infrastraksa korido



Proses long paip plain konstraksen

- | | | |
|--------------------------------------|----------------------------------|-------------------------------------|
| 1. Sevei na putim peg pastem | 8. Putim padin aninit long baret | 15. Putim kotin long paip plain |
| 2. Wok klirim bus | 9. Trensport na stringim paip | 16. Inspektim paip plain |
| 3. Greiding | 10. Bendim paip | 17. Putim paip go insait long baret |
| 4. Rausim antap graun | 11. Fes weld | 18. As-built sevei |
| 5. Putim peg long senta bilong baret | 12. Fainol weld | 19. Pedin, bekpil, greidin |
| 6. Digim baret (wil ditcha) | 13. As-built footage | 20. Haidrostetik tes |
| 7. Digim baret (rok) | 14. X-ray inspeksen weld repair | 21. Rehebilitesen na klin ap |

Paip plain konstraksen



EIS process and update

- Gavaman bai i lukluk long pepa bilong EIS long kamapim tok orait o disisen sapos ol i laikim Projek long go het.
- WGJV i lukluk long putim pepa go long opis bilong CEPA long mun Jun.
- CEPA bai kolim bung long kominiti na tokaut long painim aut bilong EIS. Na tu bai i kisim toktok bilong kominiti long dispela taim.
- Aninit long EIS, dispela ol stadi bin kamap:
 - Nois na vaibresen
 - Kwaliti bilong eya na grinhaus ges
 - Terestriol ekologi
 - Main geokemistri
 - Wara long graun aninit
 - Wara long graun antap
 - Freswara ekologi
 - DSTP (ekotoksikologi na modeling)
 - Dip solwara na nambis marin ekologi
 - Pis na hau ol pipol yusim marin risos
 - Sosioekonomik
 - Stadi bilong kalsa
 - Stadi bilong helt na ol birua i ken kamap

